

OCEANIA

P R E C I S I O N



RENEGADE

OPERATION & MAINTENANCE MANUAL

20251002A

OPERATION

The RENEGADE operates on a lever-release, straight-blowback action. Each shot requires the shooter to release the bolt manually using the lever before the rifle can chamber the next round. Safe handling and correct sequencing of each step is essential, both for performance and for the long-term reliability of the rifle.

COCKING THE ACTION AND APPLYING SAFETY

Before loading or handling, the action should be cocked and the safety engaged. This ensures the rifle is safe to manage during the loading process.

- **Point the rifle in a safe direction.**
- **Pull the charging handle fully to the rear until the bolt locks open.**
- **Rotate the safety selector to the SAFE position.**

INSERTING THE MAGAZINE

With the rifle secured on safe and the action open, a magazine can be inserted. Ensure it locks firmly before proceeding.

- **Insert a loaded, compatible magazine (Glock pattern) into the magazine well until it locks. Pull down gently on the magazine to confirm proper seating.**

RELEASING THE LEVER

The RENEGADE chambers rounds using a manual lever-release system. The lever is positioned for the trigger finger and allows the bolt to travel forward when depressed.

- **With the bolt locked open, depress the release lever located above and to the right of the trigger guard.**
- **Pressing the lever allows the bolt to travel forward, chambering a round.**

OPERATING THE SAFETY

The safety selector prevents unintentional discharge. Always confirm its position before firing.

- **SAFE** obstructs the trigger and prevents discharge.
- **FIRE** allows firing once the bolt is forward and chamber loaded.

ALWAYS ASSUME THE RIFLE IS READY TO FIRE AND KEEP THE RIFLE POINTED IN A SAFE DIRECTION. LEAVE ON SAFE UNTIL SIGHTS ARE ON TARGET AND YOU ARE PREPARED TO FIRE.

READY FOR FIRE

Once loaded and placed on **FIRE**, the rifle is ready to operate. One round is discharged per trigger press, and the bolt will remain locked to the rear until released again.

- **Switch the safety selector to FIRE.**
- **Pull the trigger to discharge one round.**
- **After firing, the bolt will travel rearward and lock open.**

RECOCKING WITH THE LEVER

The RENEGADE requires manual lever input between shots. This is an intentional part of the action design.

After every shot, the bolt remains locked at the rear.

To continue firing, press the release lever fully to chamber the next round. Repeat this sequence after each shot.

EMPTY MAGAZINE CONDITION

WHEN THE MAGAZINE IS EMPTY, THE BOLT WILL NOT LOCK TO THE REAR.

When the magazine is empty, the bolt **will not** lock back automatically.

If already released, manually pull the cocking handle to the rear locked position.

- **Insert a fresh magazine**
- **Press the release lever to chamber the first round.**
- **For training or dry practice, use snap caps rather than dropping the bolt on an empty chamber.**

MAINTENANCE

Regular cleaning and inspection of the RENEGADE are critical to keeping it reliable. The rifle is built to close tolerances, and carbon fouling will affect performance if not addressed promptly. Basic maintenance follows the same principles as the AR-15 platform, but with additional attention to the lever-release and fire control components. A deep clean after every use will ensure smooth operation and long service life.

SAFETY PRECAUTIONS

Maintenance must always begin with a cleared rifle in a safe workspace. Ensuring no live ammunition is present is critical to safe handling.

ENSURE THE RIFLE IS UNLOADED AND REMOVE ALL LIVE AMMUNITION FROM THE WORK AREA.

REQUIRED TOOLS AND MATERIALS

A basic cleaning kit is required to keep the rifle in working order. Quality solvents, oils, and brushes help preserve both reliability and finish.

- **Cleaning rod, bore brush, chamber brush**
- **Nylon brush, cotton patches, lint-free cloth**
- **Solvent and lubricating oil**
- **Plastic punch or tool for takedown pins**
- **Snap caps for function checks**

FIELD STRIPPING

Basic disassembly allows the rifle to be cleaned and lubricated effectively.

- **Separate upper and lower receivers using the takedown pins. Ensure the bolt is forward before disassembly.**
- **Release the trigger in a controlled manner to avoid spring damage.**

BOLT AND FIRE CONTROL GROUP

The bolt assembly and fire control components are the most stressed parts of the rifle. Regular cleaning and lubrication here will ensure smooth operation.

- **Remove bolt assembly, inspect for fouling.**
- **Clean bolt face, extractor, firing pin, and contact points.**
- **Apply oil to forward contact surfaces, firing pin, and guide.**
- **Lubricate trigger, hammer, and lever surfaces; work lever until smooth.**

BARREL AND CHAMBER

The bore and chamber accumulate fouling with every shot. Cleaning correctly preserves accuracy and reliability.

- **Run solvent-soaked patch through bore from chamber to muzzle.**
- **Use bore brush to remove fouling.**
- **Dry with clean patches until no residue remains.**
- **Apply a light film of oil for protection, remove before next use.**

UPPER RECEIVER

The upper receiver houses the moving parts of the action. Keeping its surfaces clean and lubricated helps reduce wear.

- **Clean inside of receiver with nylon brush and solvent.**
- **Wipe clean and apply light oil to charging handle rails and bolt path.**

LOWER RECEIVER

The lower receiver holds the trigger components and magazine interface. Wipe and inspect regularly to ensure proper function.

- **Wipe down trigger group and interior surfaces.**
- **Clean magazine well and check magazine release function.**

REASSEMBLY

After cleaning, careful reassembly and a function check confirm the rifle is safe to return to service.

- **Reinstall bolt into upper.**
- **Join receivers with takedown pins.**
- **Perform function check with snap caps:**
 - **Safety operation**
 - **Trigger reset**
 - **Lever release engagement**

CLEANING FREQUENCY

Consistent cleaning prevents fouling-related stoppages.

- **Clean and lubricate after every firing session to prevent carbon build-up.**
- **Wipe down and oil external surfaces after handling to prevent corrosion.**

STORAGE

- **Store rifle unloaded in a secure, dry environment.**
- **Apply protective oil film for long-term storage.**

SERVICE INTERVAL

Over time, wear parts must be monitored. Scheduled inspection reduces the chance of failure during use.

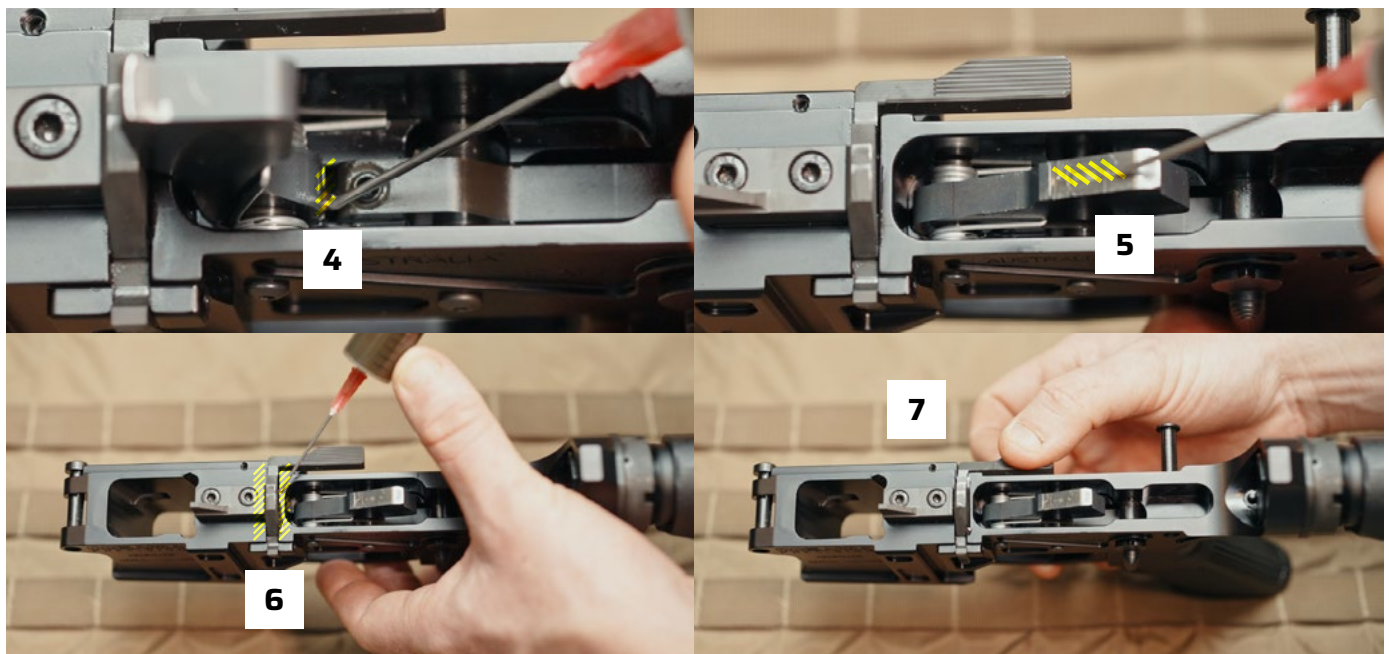
- **Inspect wear points (bolt catch, lever surfaces, hammer) every 500–1000 rounds.**
- **Return to Oceania Precision or a qualified armourer if abnormal wear or malfunctions occur.**

WARNING: Ensure the rifle is unloaded before maintenance. Remove all live ammunition from the area.

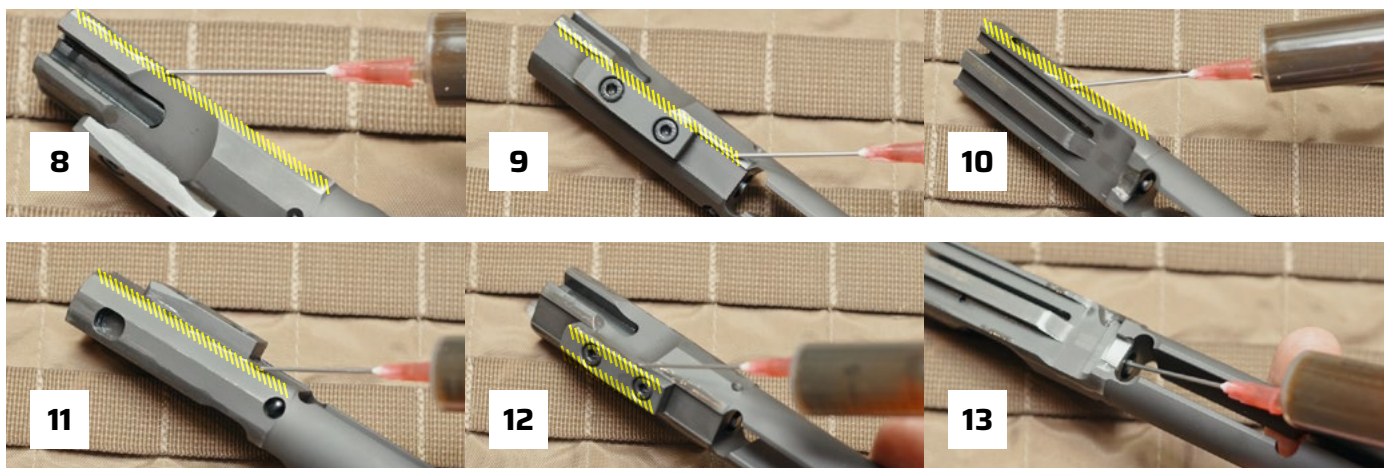
Separate the upper and lower receivers by pushing the take down pins (1,2) through with a plastic tool. Ensure the bolt is in the forward position by taking up tension on the charging handle and resisting the spring tension to gently bring the bolt forward. Release the trigger (3) in a similar manner, ensuring it is not released under spring tension.



Apply oil to the contact surface in the trigger (4), the hammer (5), and the front and rear of the lever (6). Work the oil into the lever by repeatedly pressing the lever until smooth (7).



Apply oil to the four contact surfaces on the forward end of the bolt (8-11), the guide (12) and firing pin (13).



NOTE: The rifle must be cleaned and oiled after every use to prevent excessive carbon build up.

TROUBLESHOOTING

FAILURE TO LOAD

A round does not chamber after attempting to release the bolt.

- **Magazine not seated correctly – Inspect magazine, reinstall firmly until locked.**
- **Action excessively fouled – Disassemble, clean, oil, and reassemble.**

FAILURE TO FIRE

Trigger is pulled but the rifle does not discharge.

- **Bolt retained on primary safety sear – Pull charging handle to the rear to re-cock the hammer, depress release lever, move selector to FIRE, aim, and pull trigger.**
- **Bolt retained on secondary safety sear**
- **Pull charging handle to the rear to re-cock the hammer**
- **Move safety selector to SAFE**
- **Clear any partially chambered or loose ammunition from receiver**
- **Depress release lever**
- **Move safety selector to FIRE**
- **Aim and pull trigger**
- **Bolt fully closed but fails to fire**
- **Inspect action for heavy fouling**
- **Remove bolt**
- **Take out firing pin retention pin, firing pin, and return spring**
- **Thoroughly clean all parts**
- **Reassemble and confirm firing pin moves freely**
- **Lightly oil and reinstall**

FAILURE TO EXTRACT OR EJECT

A spent cartridge fails to clear the chamber or is not ejected.

- **Broken extractor – Inspect bolt. Replace extractor if damaged.**
- **Broken ejector base – Inspect lower receiver. Replace ejector as necessary.**
- **Excessive chamber fouling – Inspect and clean chamber thoroughly.**

WARRANTY

Oceania Precision provides a limited lifetime warranty against defects in materials and workmanship for the RENEGADE rifle.

SCOPE

- **Covers defects in manufacturing and material quality.**
- **Applies for the usable life of the firearm under normal use and correct maintenance.**

EXCLUSIONS

- **Normal wear of springs, pins, and serviceable parts.**
- **Damage from misuse, neglect, improper maintenance, or unauthorised modification.**
- **Damage caused by non-standard or unsafe ammunition**
- **Cosmetic wear such as scratches, marks, or finish degradation.**

CONDITIONS

- **Warranty applies only to the original purchaser and is non-transferable.**
- **Firearm must be maintained in accordance with this manual.**
- **Oceania Precision reserves the right to inspect any returned firearm or component to determine cause of fault.**

SERVICE

In the event of a defect:

- **Cease use immediately.**
- **Contact Oceania Precision or an authorised dealer for return instructions.**
- **Provide proof of purchase and a description of the issue.**
- **Upon inspection, Oceania Precision will repair or replace the defective part at its discretion.**

THIS WARRANTY IS LIMITED TO REPAIR OR REPLACEMENT OF PARTS.
OCEANIA PRECISION IS NOT LIABLE FOR INCIDENTAL OR CONSEQUENTIAL DAMAGES.